

EDGE^{PLUS} SERIES

UNCOVER THE MICROSCOPIC WORLD



Dino-Lite
Digital Microscope

A look into the new member of the Dino-Lite family, Edge^{PLUS} series

Widely used in a variety of industries and applications, the Dino-Lite Edge^{PLUS} series has set a new standard in image quality and performance of handheld digital microscopes. As technology progresses and demand for specialized products increases, AnMo Electronics is dedicated to manufacturing high-quality digital microscopes that keep pace with technological advancements.

Now, the Dino-Lite Edge^{PLUS} series has come to raise the bar to even higher levels. The new Edge^{PLUS} series provides users an indispensable tool for inspection, analysis, and image documentation.

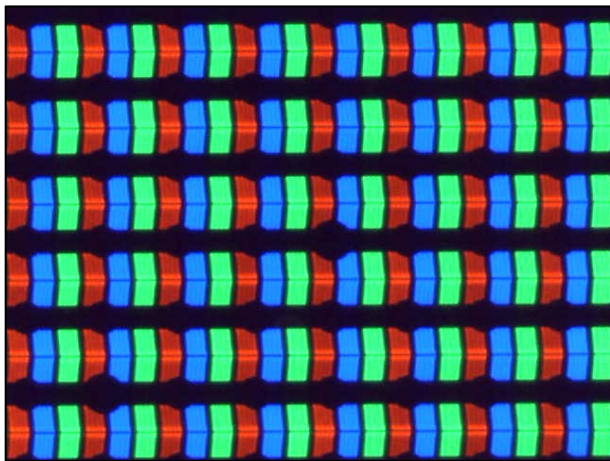


High-quality imaging with Edge^{PLUS} series

While building on top of the 1.3MP Edge series, the Dino-Lite team improved the new series color fidelity, contrast, sensitivity, and live imaging frame rate. The new Dino-Lite Edge^{PLUS} series models provide professional and reliable hand-held digital microscopes capable of high-quality image acquisition.

Color fidelity

Color reproducibility is an important aspect in digital image processing that affects the overall image quality. The new Edge^{PLUS} series offers unrivaled natural-looking color images.



RGB LED screen



Screw nut

Contrast

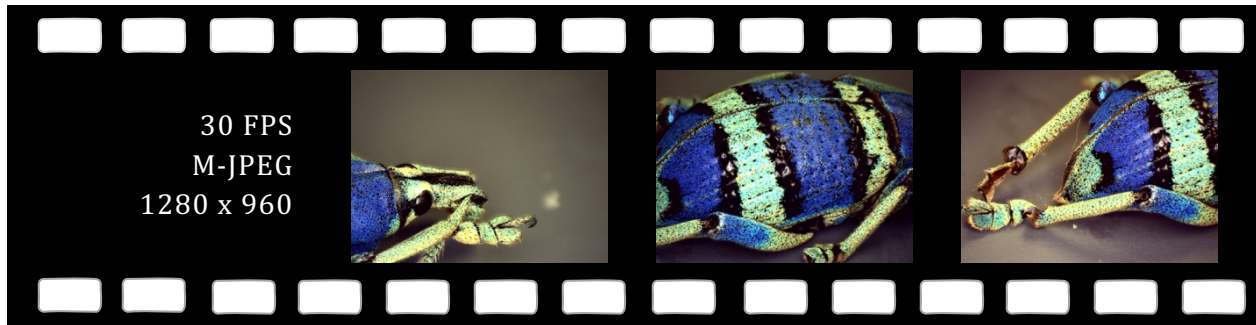
Edge^{PLUS} series delivers images with a higher contrast than the 1.3MP Edge series. Expect clearer image details when imaging with Edge^{PLUS} series.



PCB

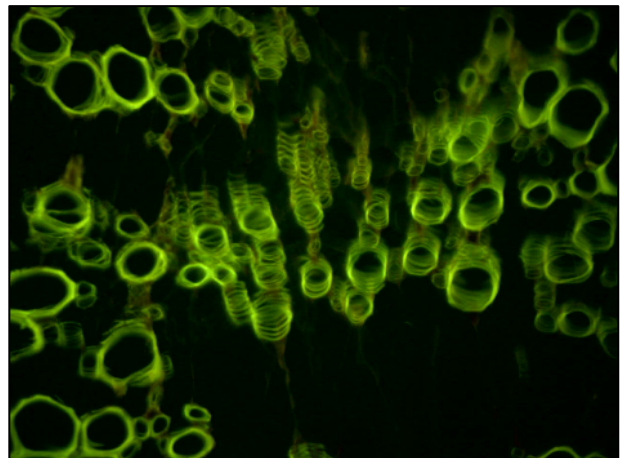
Frame rate

With upgraded CMOS sensors and the use of low-loss compression MJPEG format, the Edge^{PLUS} series microscopes offer higher-quality live imaging at up to 30 FPS, doubling the 1.3MP Edge series frame rate performance.



High sensitivity

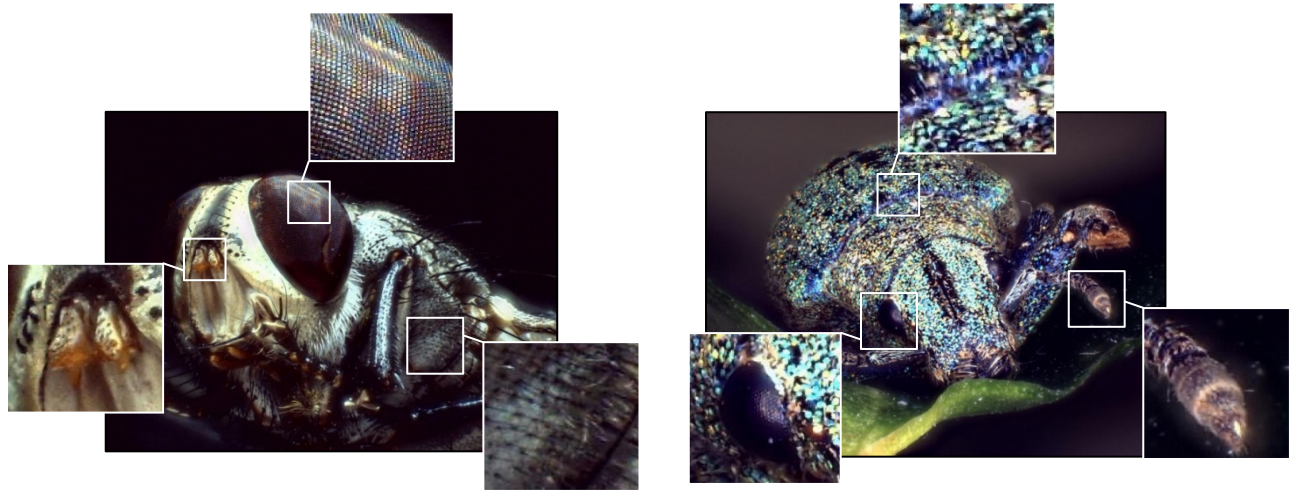
The Edge^{PLUS} series high sensitivity sensors may detect faint features that would otherwise remain unseen— useful when viewing samples under fluorescence, UV, and infrared.



Spinacea oleracea

Improved EDOF

Being at the forefront of digital microscopy, Dino-Lite has developed several microscopes capable of capturing EDOF images with the click of a button. Edge^{PLUS} AM4917's further improved optics and delicate focus control provide crisper, all-in-focus EDOF images.



Edge^{PLUS} AM4917

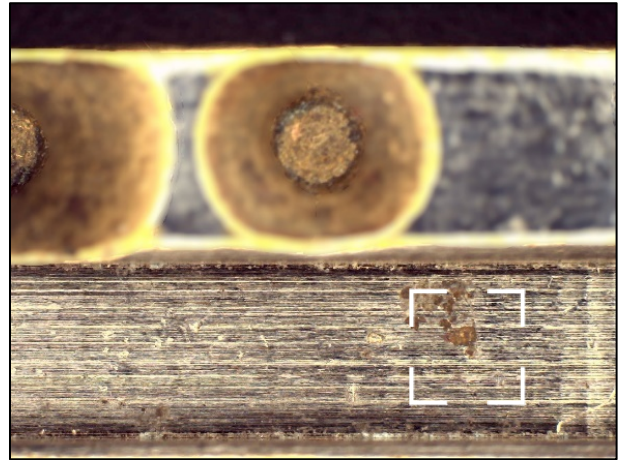
An EDOF composite image can provide fine details from different depth planes. The magnified sections display layers at different depths, all showing high-quality and detailed features.

Depth Information

Acquiring more useful depth information is now possible with Edge^{PLUS} AM4917 delicate focus control. By indicating the variations in focus shifts, users can obtain depth information of grooves, holes, and other types of topographical variations.



Focus shift = 0mm



Focus shift = 2.85mm

Design and appearance

Metal housing

Designed for robustness and endurance, the anodized aluminum metal housing of the Edge^{PLUS} series protects the Dino-Lite from UV and electromagnetic interferences.



Metal housing

Detachable cable

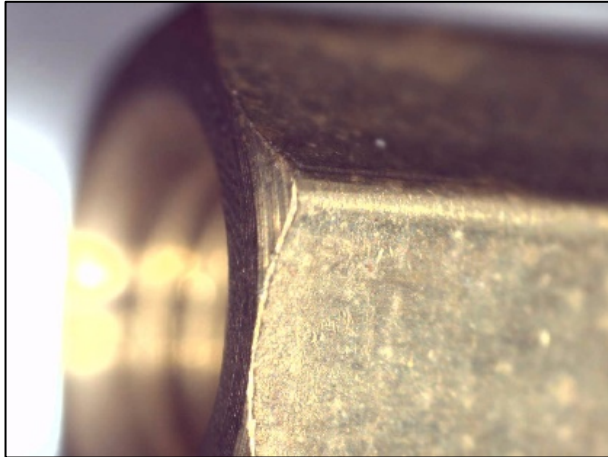
The Edge^{PLUS} series detachable cable design enhances the Dino-Lite reliability.



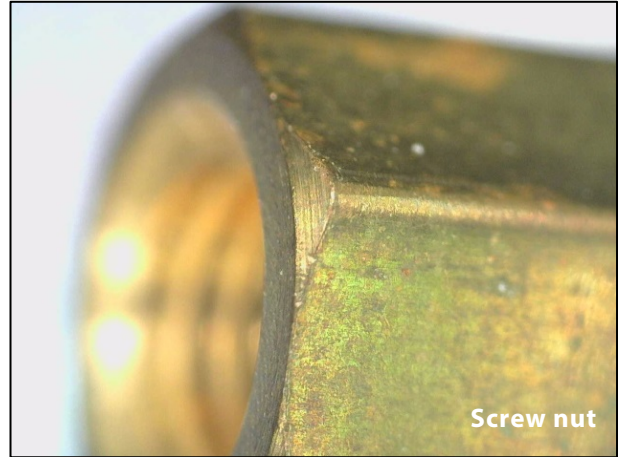
Detachable cable

Image comparison with 1.3MP Edge series

Improved color fidelity

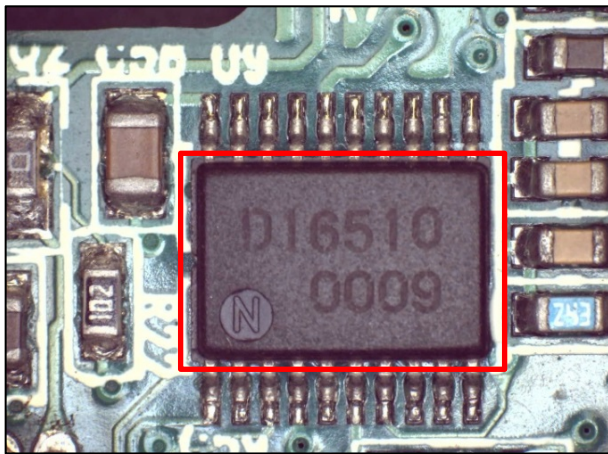


Edge^{PLUS} AM4517 series



1.3MP Edge series

Enhanced contrast

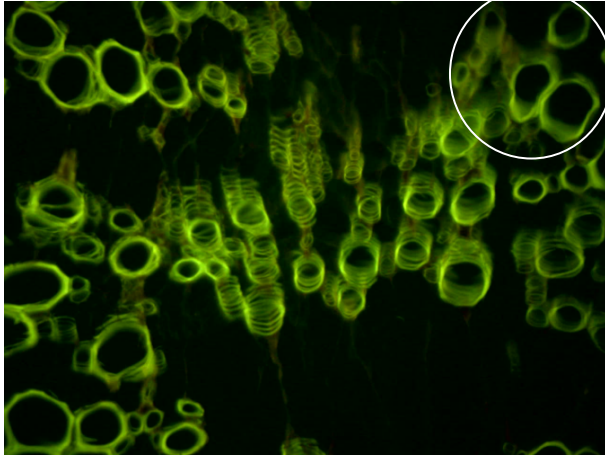


Edge^{PLUS} AM4517 series



1.3MP Edge series

Increased sensitivity



Edge^{PLUS} AM4517MT-G2FBW



1.3MP Edge AM4115T-G2FBW

All illustrations and written content are based on internal evaluations by the Dino-Lite team at the time of release. All material presented in this publication may be changed without notice.

Copyright © by AnMo Electronics Corporation. All rights reserved.

Dino-Lite
Digital Microscope